



THE
EDGE
AT MIDTOWN



expectations redefined



There once was a time when growing meant expanding outward: more space, more distance, more driveways. Yet closeness, which was lost, is now in great demand.

Creating an environment that balances natural beauty with the intricacy and density of human interaction lives at the heart of The Edge.



OKC **NOW**




Courageously pursuing risk characterizes the quintessential comeback story.

Our transformation radiates opportunity and civic vision. From the Oklahoma River to Downtown, from Film Row to Midtown, a pinpoint focus on growth from within has connected the community of Oklahoma City.

This is where we live, love, and laugh together.

You live. Your life. Your way.



 A MIND THAT IS STRETCHED TO A NEW IDEA
NEVER RETURNS TO ITS ORIGINAL DIMENSION
OLIVER WENDELL HOLMES



ESSENTIAL

Blossoming neighborhoods and districts across Oklahoma City carry distinct identities, yet share a common purpose of urban interconnectedness.

The ecology of these places invigorates its citizens. Envision a leisurely stroll at dusk, relishing the evening's meal or bicycling between districts on dedicated bike lanes at dawn. The patchwork quilt of Oklahoma City will not only entertain, but also inspire.





MIDTOWN

Just a few blocks north of Downtown, Midtown sits at the nexus of the city's activity. Offering stunning, metropolitan vistas of shimmering Downtown to the South, and the unparalleled architectural precedence of Heritage Hills to the North, Midtown is the city's eclectic heart.

A notable bustling restaurant district steeped in tradition, superior quality, and unique offerings, Midtown is like no other place.





beyond shelter

**Welcome Home.
Situated at the border
between Midtown and
Heritage Hills, The Edge is
the result of a big dream.**

**It's about being here, now.
In the moment.
In the action.
In the game.
At The Edge.**



function with flair

A teeming energy exudes from every corner of Midtown; it's an undeniable convergence of modern living and an appreciation for historic charm. Some might consider the idea of community to be lost in a bygone era. But here, you'll find life is a bounty of complements: function with flair, style with structure, and craft with consideration.

style with structure

At The Edge, life is about being at the center of the premier act in Oklahoma City. Whether it's exploring the booming retail establishments along Walker Avenue, or venturing into the neighboring districts for an evening adventure, Midtown offers the proximity to every cultural and sports venue in the Metro with enough space to step back and appreciate its beauty.

craft with consideration

The Edge boasts an architectural design reflective of its surroundings, with over 80 percent of its facades built with historical brick masonry. Its generous sidewalks and paseo passageways, connecting its inner courtyards to the streets, promote an urban living experience awash in the visual thrills of the pedestrian experience.





SYMMETRY

GROUND FLOOR RETAIL



The uniqueness of The Edge is not only in its location, but also in its building amenities, including: gated gardens, decorative railings, metal canopies, public parking spaces within the parking garage, five strategically placed elevators, and easily accessible breezeways connecting apartments.

- 1, 2, and 3-bedroom apartment homes
- Connected parking garage
- Fully-equipped 24/7 fitness center
- Virtual fitness training room
- Dual level grand clubhouse entrance
- Resident lounge with five big-screen TVs
- Community space & kitchen for entertaining
- Dedicated resident business center
- Convenient retail locations on Walker Ave.
- Handicap accessible units available



RESIDENT LOUNGE AT THE EDGE





TRANQUILITY



Offering a peaceful escape from life outside, The Edge's intricately planned interior courtyards promote not only privacy from the exterior world, but also intimately reflective spaces for those looking to soak up the sun, or listen to the sound of the waterfall amid the three, cascading courtyards. It's a slice of nature's wonders in the heart of Midtown.

- Upper, middle, and lower interior courtyards
- Lush landscaping
- Courtyard waterfall and zen rock path
- Resort-style pool for relaxation & rejuvenation
- Two beautiful outdoor fireplaces
- A pergola for gathering friends and family
- Private sitting areas tucked away throughout the community



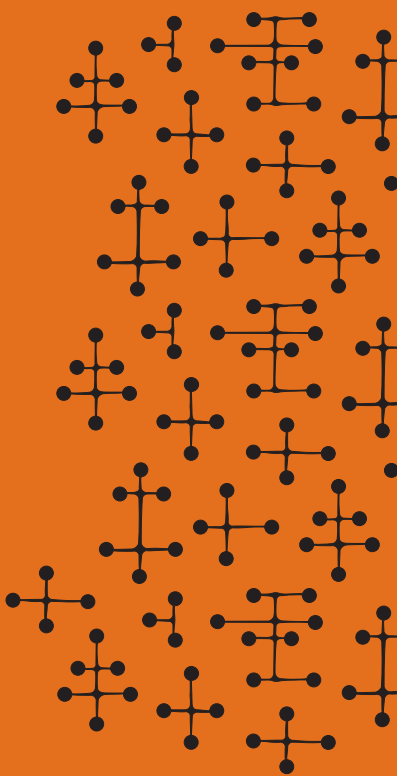


the power of place



With an eye for detail,
and a view towards the
future, The Edge makes
living easy.

Whether you are just
starting out, or looking for
a change of pace,
look no further, because
The Edge is the place.



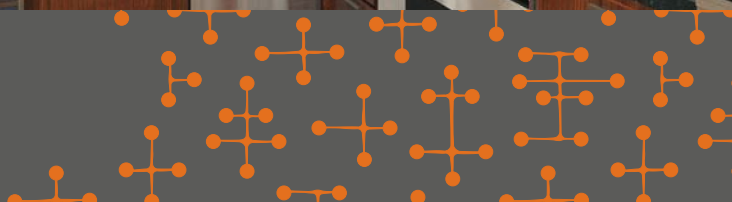


DWELLING



Luxury is about expecting the best, and not settling for less. With an open, urban loft inspired design, complete with stylish custom cabinetry, quality flooring, plentiful storage, appealing balconies, and substantial windows offering abundant light and remarkable views of the city, The Edge offers unmatched livability.

- 9' and 13' ceilings
- Spacious balconies and patios in all homes
- Granite countertops and quality flooring
- Large walk-in closets
- Sliding loft style doors in select apartments
- Full size, front load washer and dryer
- Instant on-demand hot water system
- Energy Star appliances
- Energy efficient doors, windows, and HVAC
- Enhanced insulation
- Low water-use faucets, toilets, showerheads





PERKS



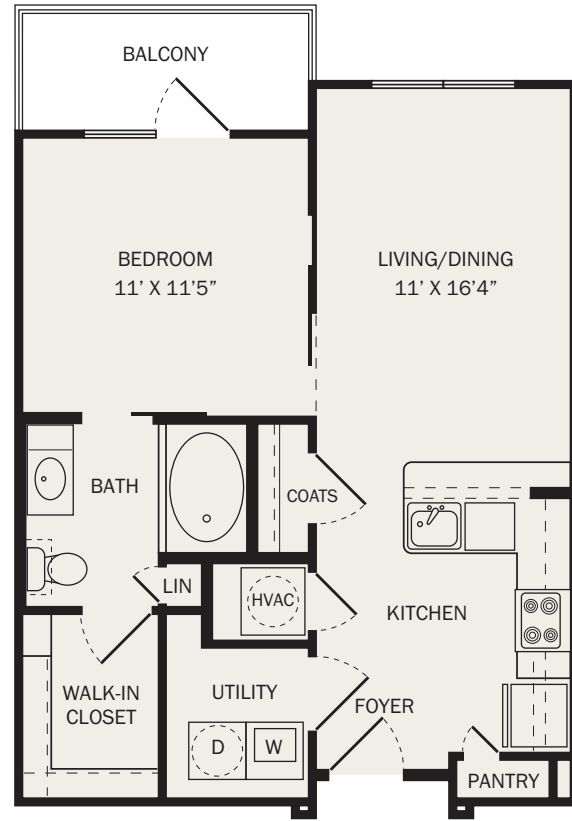
Unique in Oklahoma City, The Edge offers the first-ever rooftop dog park, with expansive views of the surrounding city. Unlike any other, The Edge's focus on outdoor spaces as places of community and gathering exemplify the interaction between the modern and the historic.

Exclusive features on the rooftop terrace:

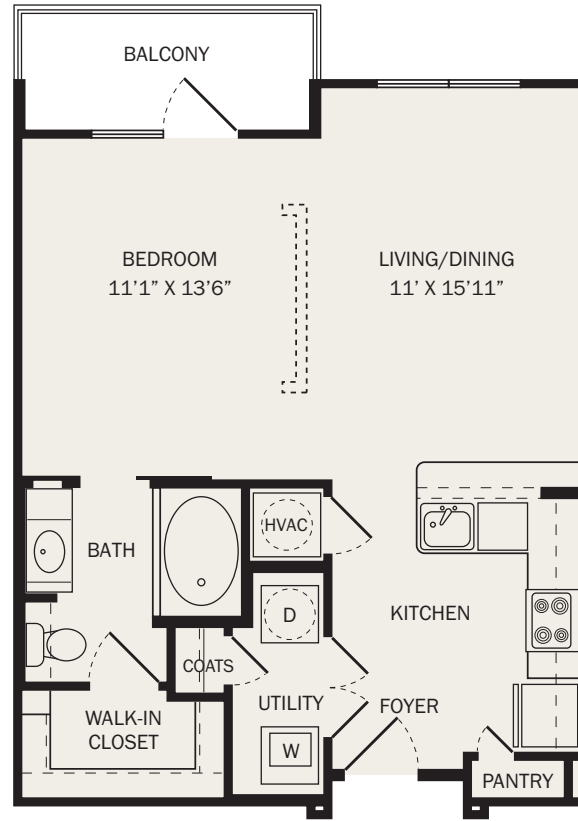
- Private rooftop dog park
- Rooftop tanning pool and deck
- Outdoor kitchen
- Open-air fireplace
- Flat screen TVs
- Magnificent rooftop views of Oklahoma City



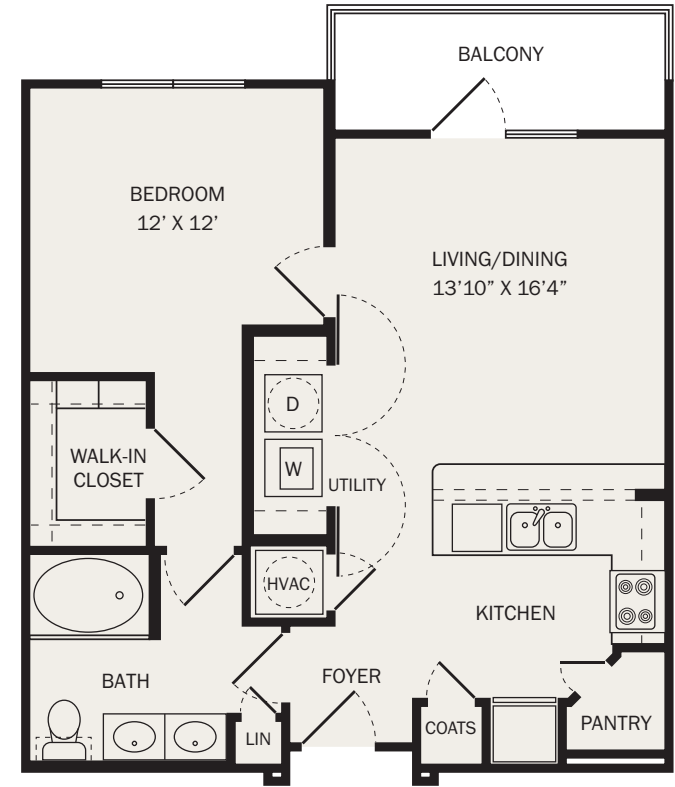
A1
1 Bedroom / 1 Bath
683 SF



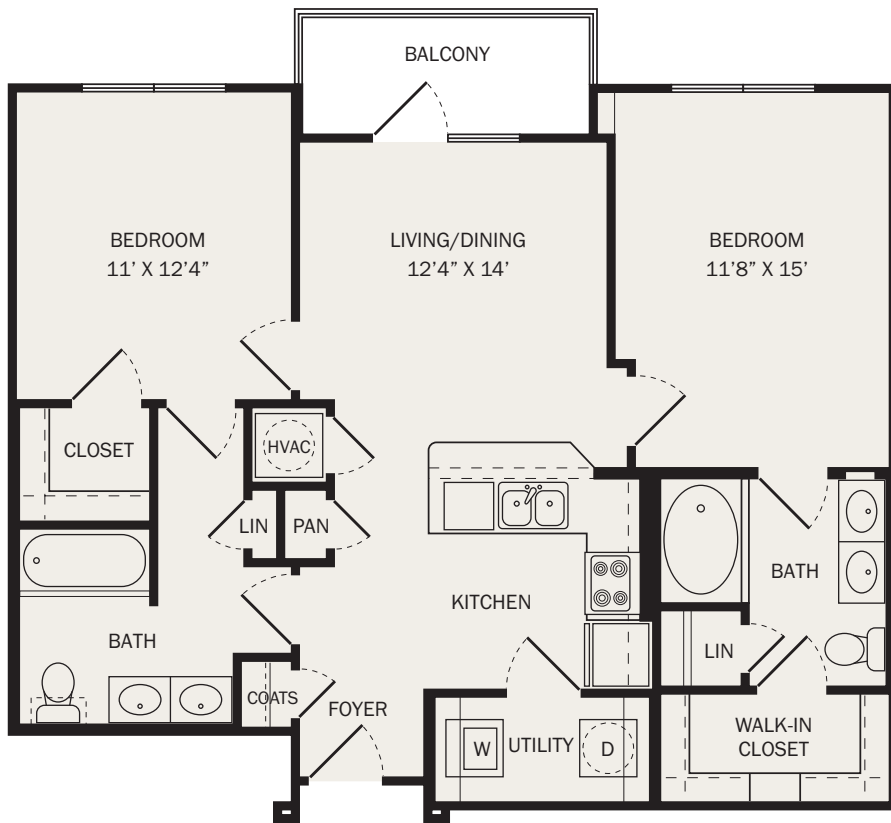
A2
1 Bedroom / 1 Bath
700 SF



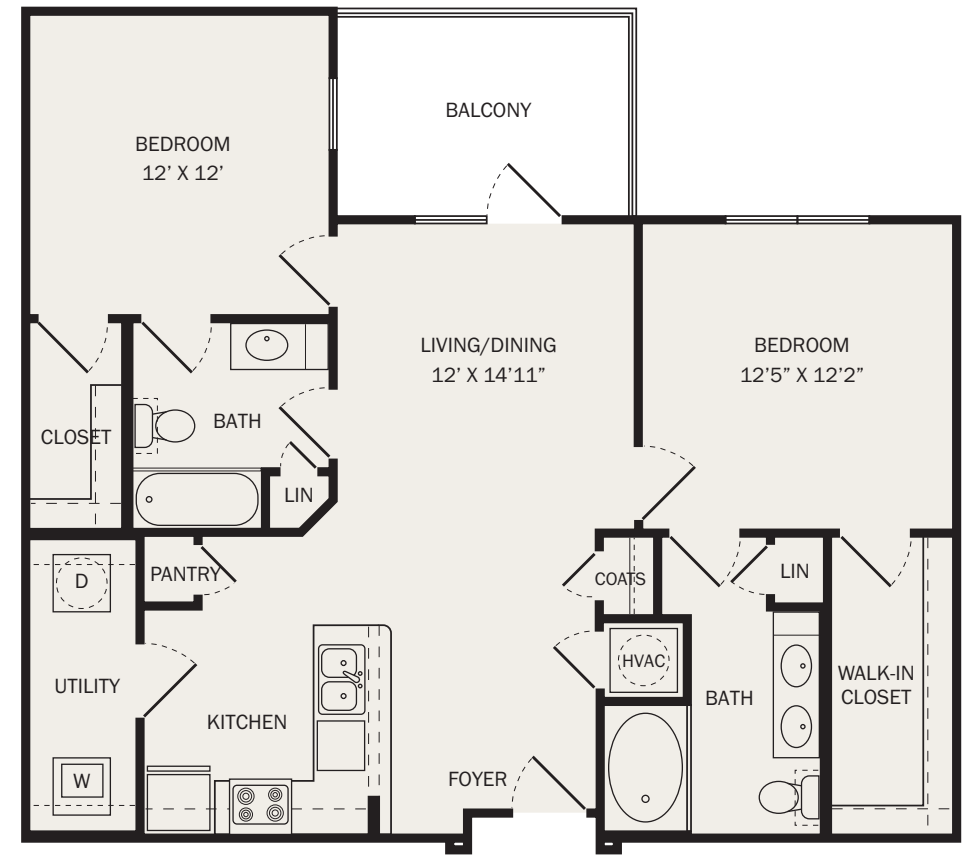
A3
1 Bedroom / 1 Bath
828 SF

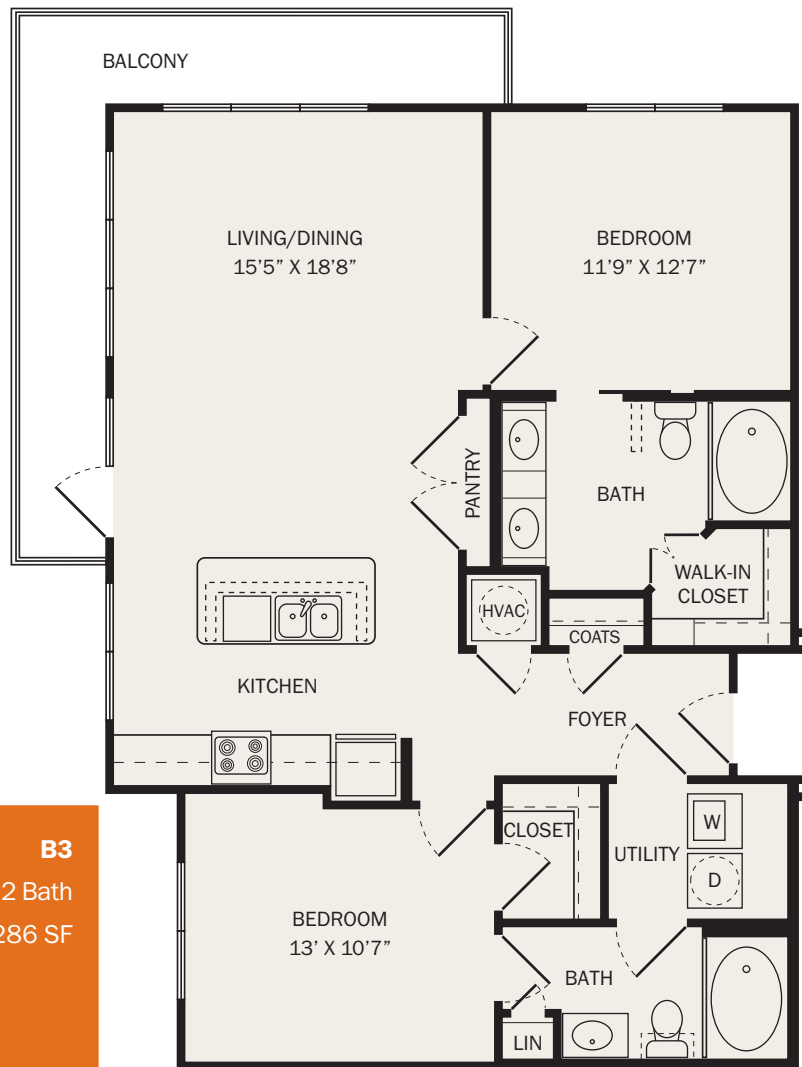


B1
2 Bedroom / 2 Bath
1,023 SF

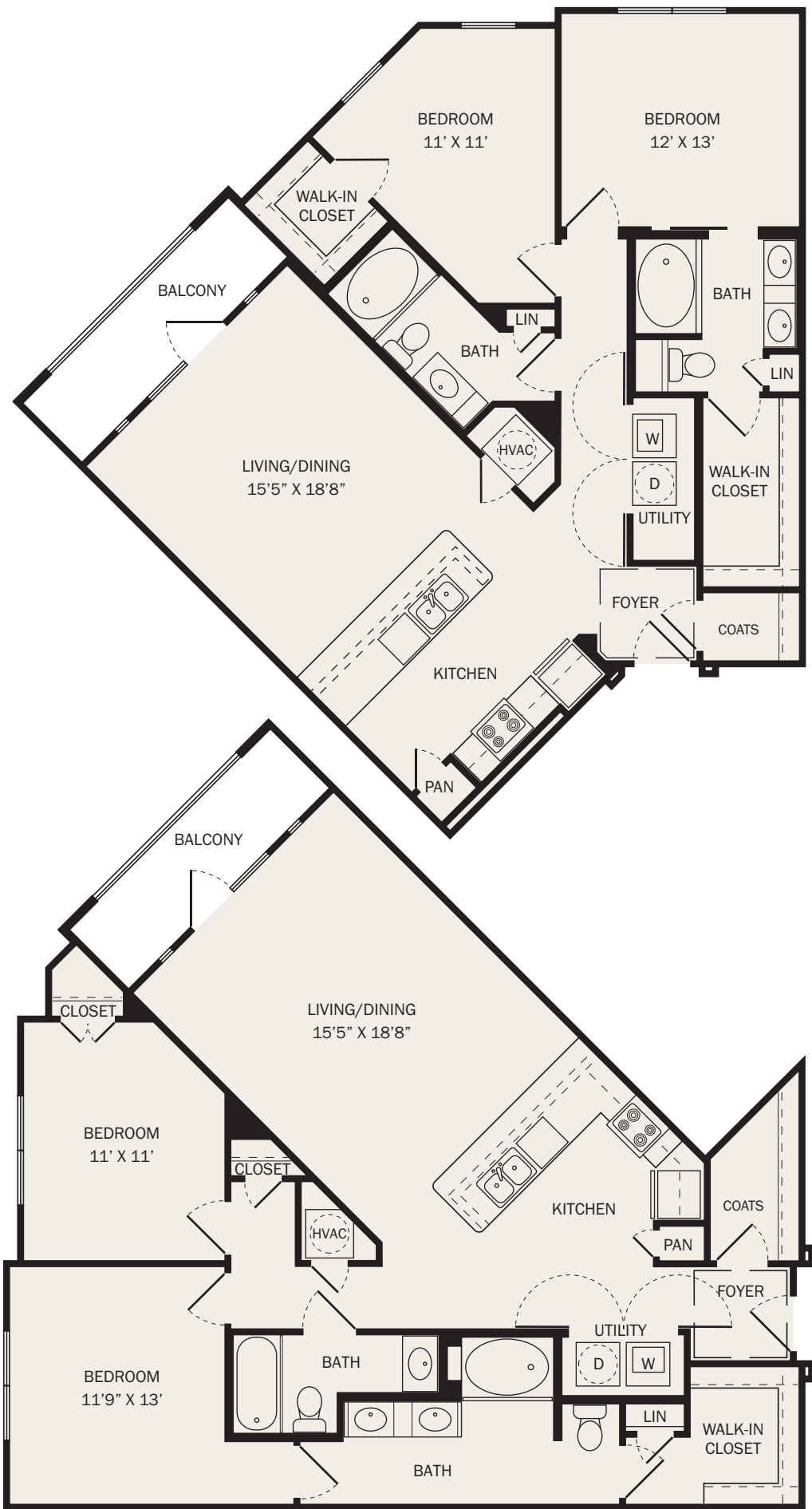


B2
2 Bedroom / 2 Bath
1,098 SF



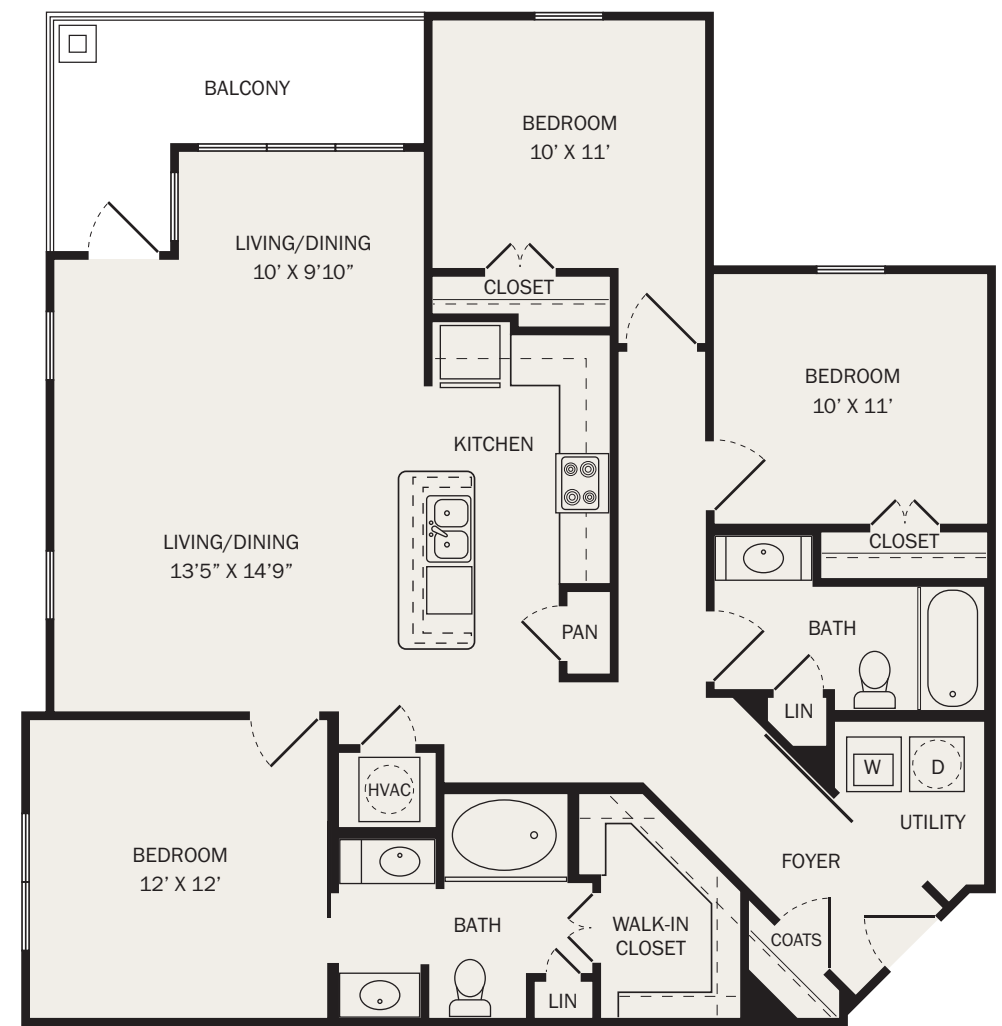


B3
2 Bedroom / 2 Bath
1,286 SF

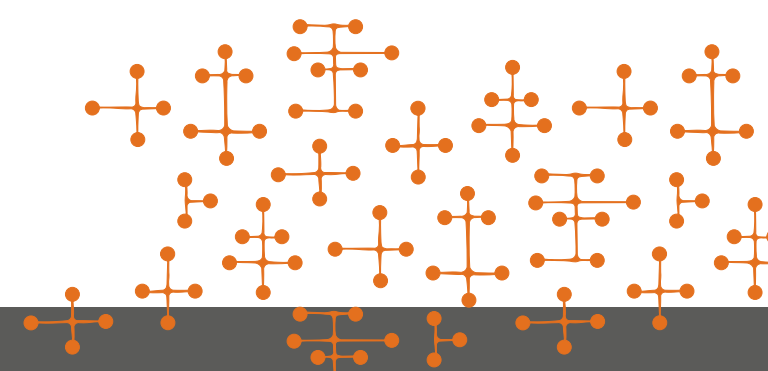


B5
2 Bedroom / 2 Bath
1,360 SF

B4
2 Bedroom / 2 Bath
1,325 SF



C1
3 Bedroom / 2 Bath
1,442 SF





PERSPECTIVE

When we are presented with the opportunity to define a space, seeing what lies in its construction is only the introduction. Whether it is a specific structural detail that catches your eye, or an architectural feature that sparks your interest, it is the concert of the presentation that lends its spirit. It is about the overall environment: the balance between

fabrication and sensation. No longer can buildings stand isolated; they must serve as an integrated structure supporting those who dwell within them. It is about participating within a community, recapturing the concept of neighbor.

At Cornerstone Development, it's about people.



www.edgemidtown.com

1325 N. Walker Ave.
Oklahoma City, OK 73103

PH 405 601 0331
FX 405 601 0247

A project by Cornerstone Development
To view our sister properties and other developments, please visit our website:
cornerstonedelivers.com



Management by CS Management LLC



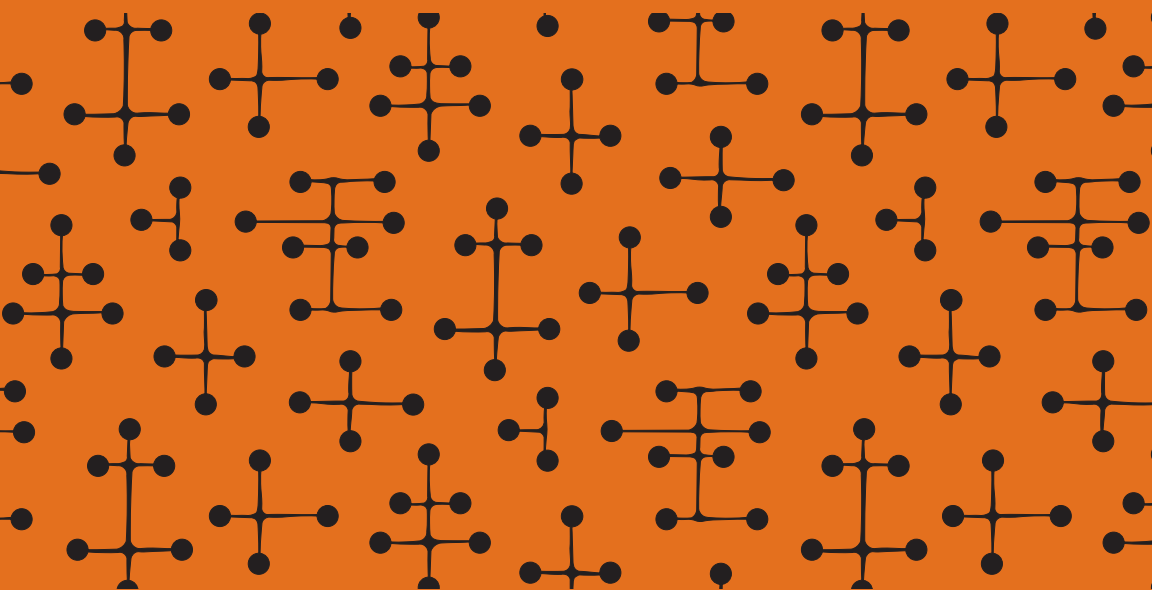
FOR YOUR CONSIDERATION

- | | | |
|--|--|--|
| visitokc.com | midtownokc.com | growinokc.com |
| downtownokc.com | bricktownokc.com | greatergrads.com |
| abetterlifeokc.com | welcometobricktown.com | travelok.com |
| okcchamber.com | | okcommerce.gov |





THE
EDGE
AT MIDTOWN



1325 N. Walker Ave.
Oklahoma City, OK 73103

PH 405 601 0331
FX 405 601 0247

www.edgemidtown.com

